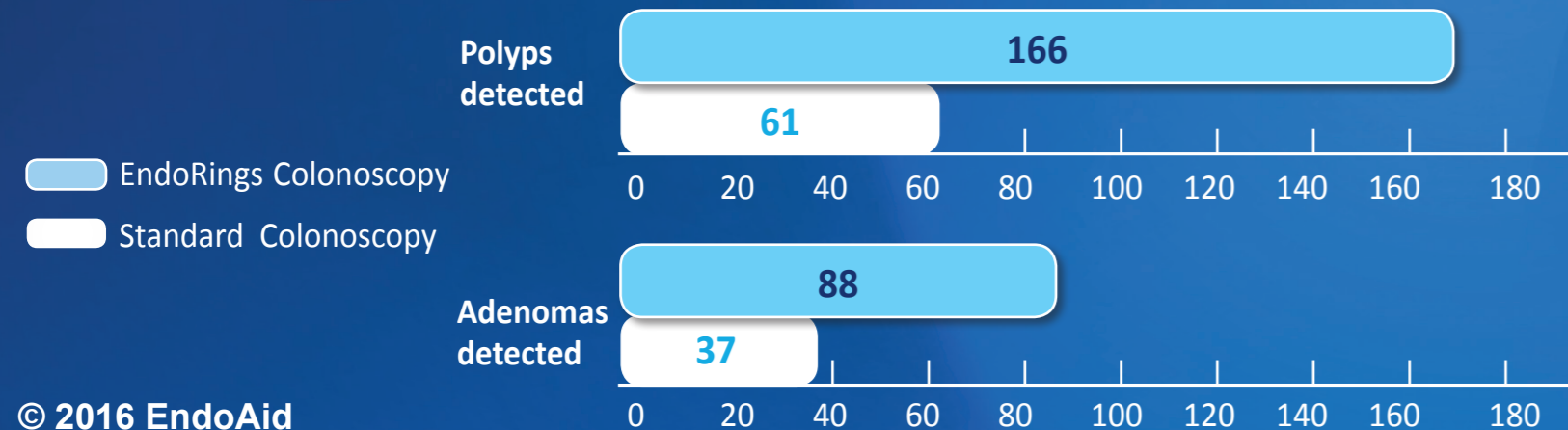
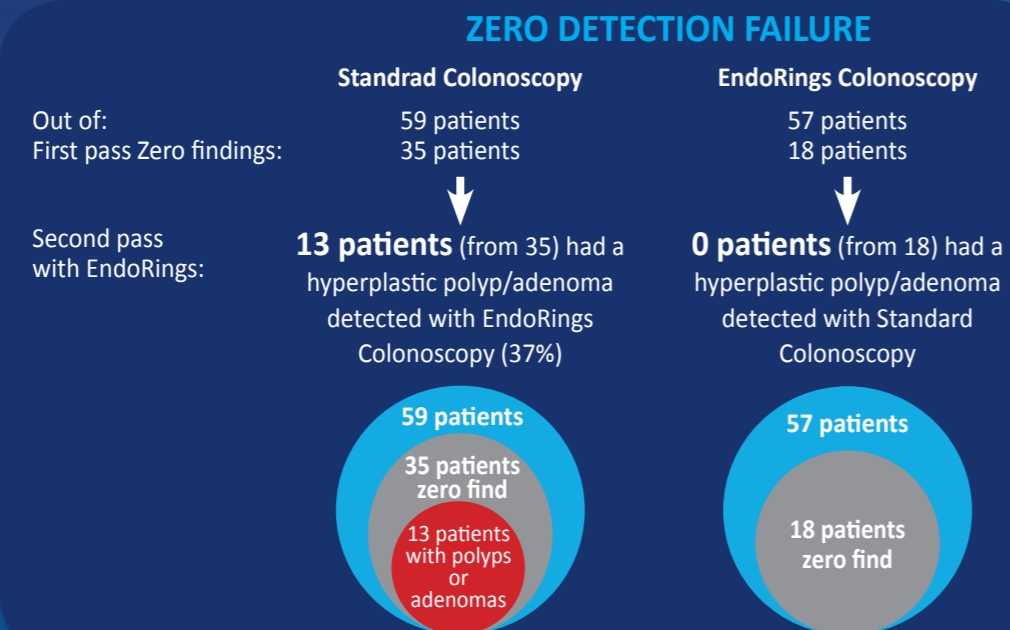


Clinical Evaluation of the EndoRings: “The CLEVER study”

Final results of prospective, randomized, multi-center tandem colonoscopy trial

Drs. Peter Siersema, Doug Rex, Ian Gralnek, Ori Segol, Vincent Dik, Alain Suissa and Leon Moons performed a randomized, prospective tandem study comparing the EndoRings to standard colonoscopy in the Netherlands, United States and Israel.

in 126 patients, the Adenoma Detection Rate was 49.1% with the EndoRings, versus 28.8% with a standard colonoscope. The number of polyps and adenomas detected by the EndoRings was more than twice that of standard colonoscopy.



ENDO AID

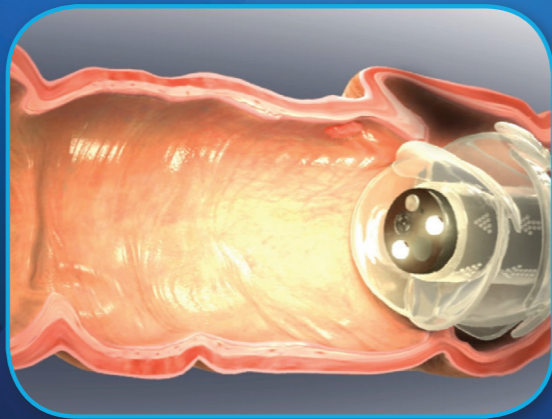
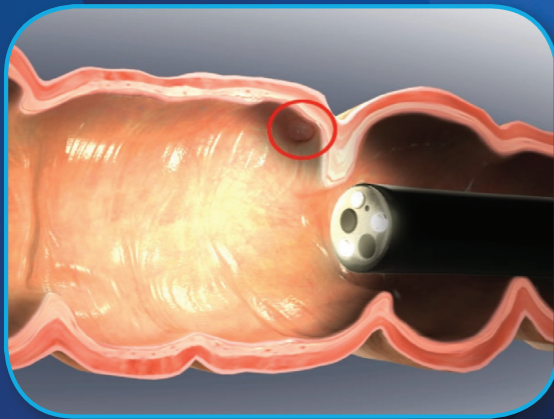
EndoRings™ II Distal Attachment

THE BEST VIEW YOU CAN GET

THE BEST VIEW YOU CAN GET

- Do you send all your patients home, polyp-free?
- How well can you see behind the colon's folds?
- How can you better find hidden polyps with your preferred colonoscope and workflow?

37% of the zero detected polyp/adenoma patients undergoing standard colonoscopy are misdiagnosed



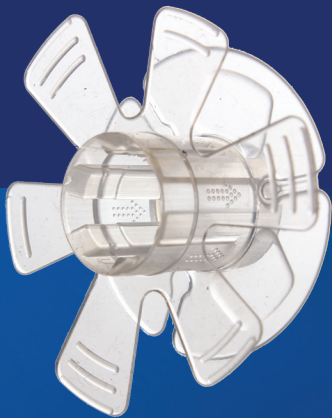
Gentle smoothing of colon folds allows for improved visibility



For each 1% increase in adenoma detection rate (ADR) there is a 3% reduction in the risk of interval colorectal cancer
(Douglas Corley, MD, from Kaiser Permanente in Oakland , California)

EndoRings II Distal Attachment

EndoRings II is a silicone-rubber device that is fitted onto the distal end of the colonoscope. 2 layers of flexible, soft circular rings, gently flatten folds during withdrawal for improved visibility. Colonoscopy with the EndoRings II does not interfere with the normal washing, suctioning, and therapeutic capabilities of the colonoscope and does not interfere with the field of view.



FEATURES	BENEFITS
Up to 50mm diameter	<ul style="list-style-type: none">• Gently flattens colon folds during withdrawal for improved view
Unique design - 2 layers of rings	<ul style="list-style-type: none">• Maintains a central position in the lumen• Stabilizes scope during polypectomy• Minimal resistance during insertion
Soft silicone material	<ul style="list-style-type: none">• Collapses during insertion• Enables easy ilial intubation• Latex Free
2 sizes	<ul style="list-style-type: none">• E102 - Adult Colonoscope Fit• E103 - Slim Adult Colonoscope Fit